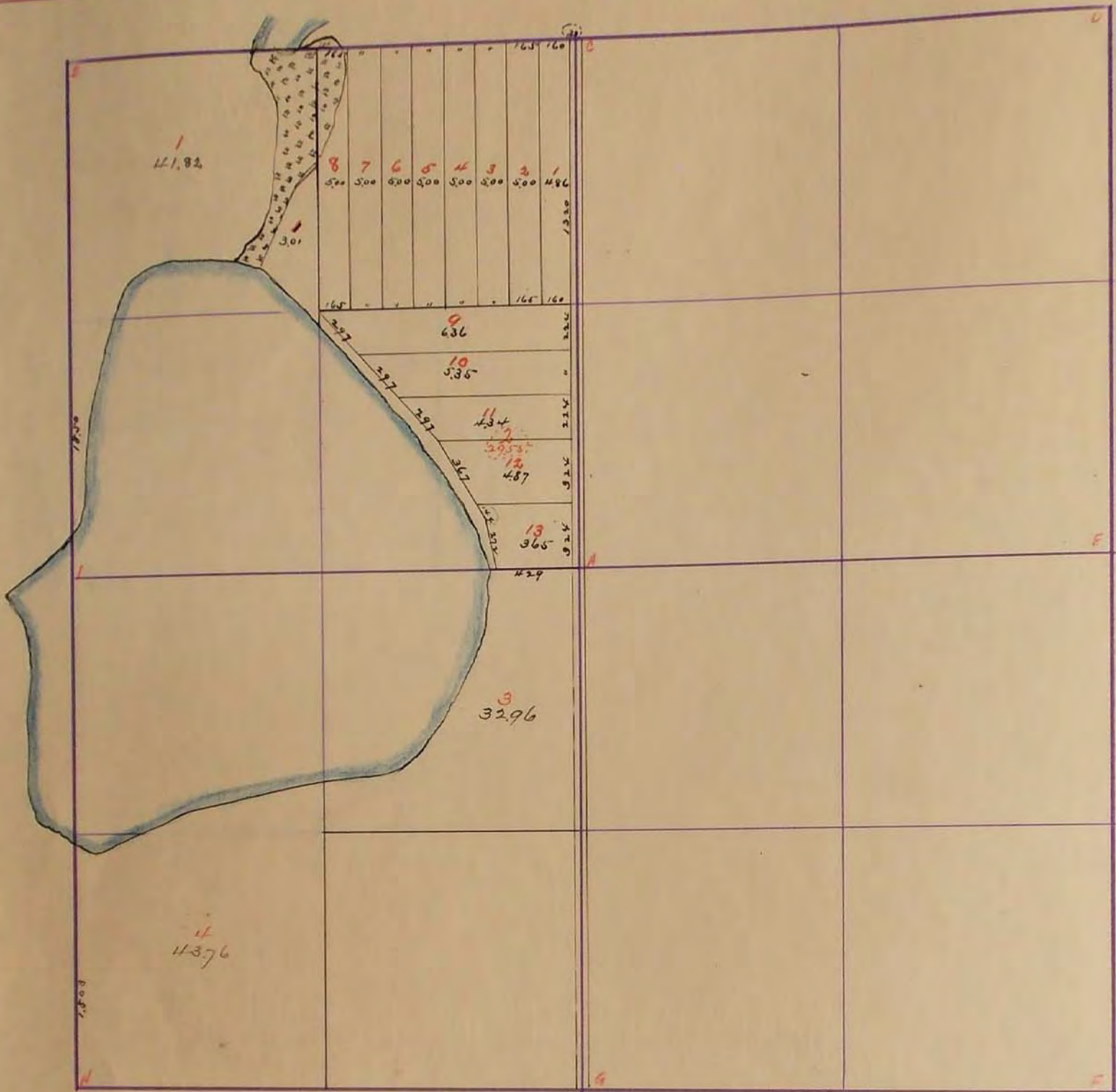


SURVEYOR'S RECORD

Section **36**

Township **105**

Range **40**



B.H. Haalstenaroft

June 10 1937

- G Found old corner stone placed cement monument on top of some 6" round monument with square iron pin on top of some monument 7' long

April 1974

- B Stake with + 22" below surface. Placed 5/8" x 18" iron stake over + NE cor. of N. Abut of Bridge 44.40' SE, 24.30' NE, N.C. in R.P. SW. 45.15'
- D Found Pointed Field Stone 10" below surface, Placed 11" S.E.P. along side of it. R.P. Center Nut on W. Side Cons. Cor Post. S.E. 41.62'

SURVEY No. *No 7*

Section *36*

Town *105*

Range *40*



FIELD NOTES.

B. L. Woodlensoft

June 10, 1932

Found old corner stone, placed cement monument on top of same 6" Round monument with square iron pin in top of same. monument 2' long.

*946
1320
2306
2004*

*166
11936
55916
65076
132076
157026*